

# MONTHLY MEMBERSHIP PROGRESS REPORT

LOCATION WEST VIRGINIA

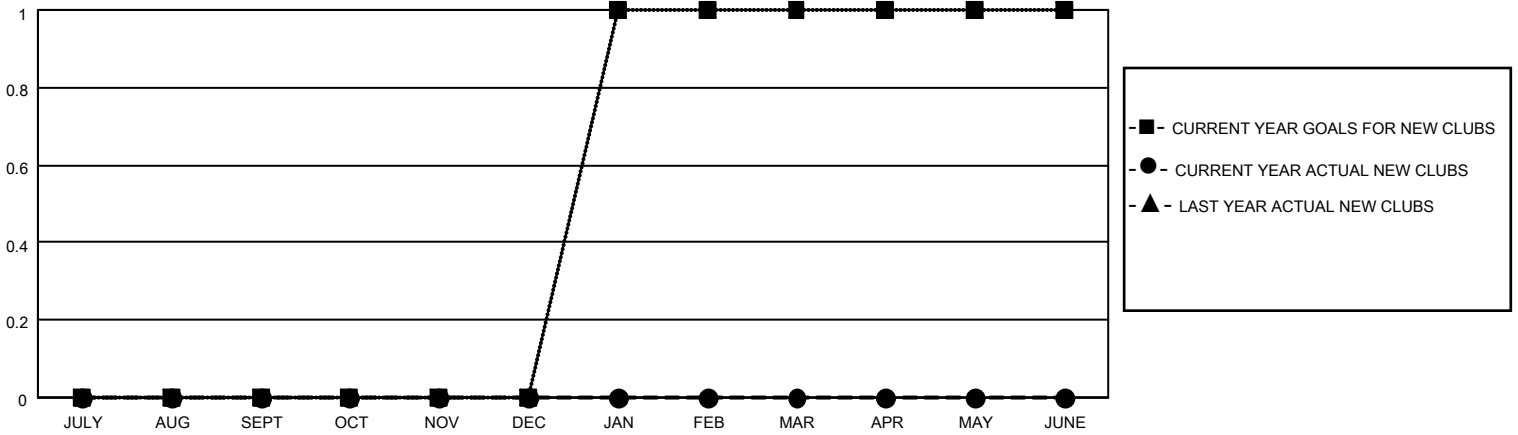
District 29 L

Results as of: 1/31/2021

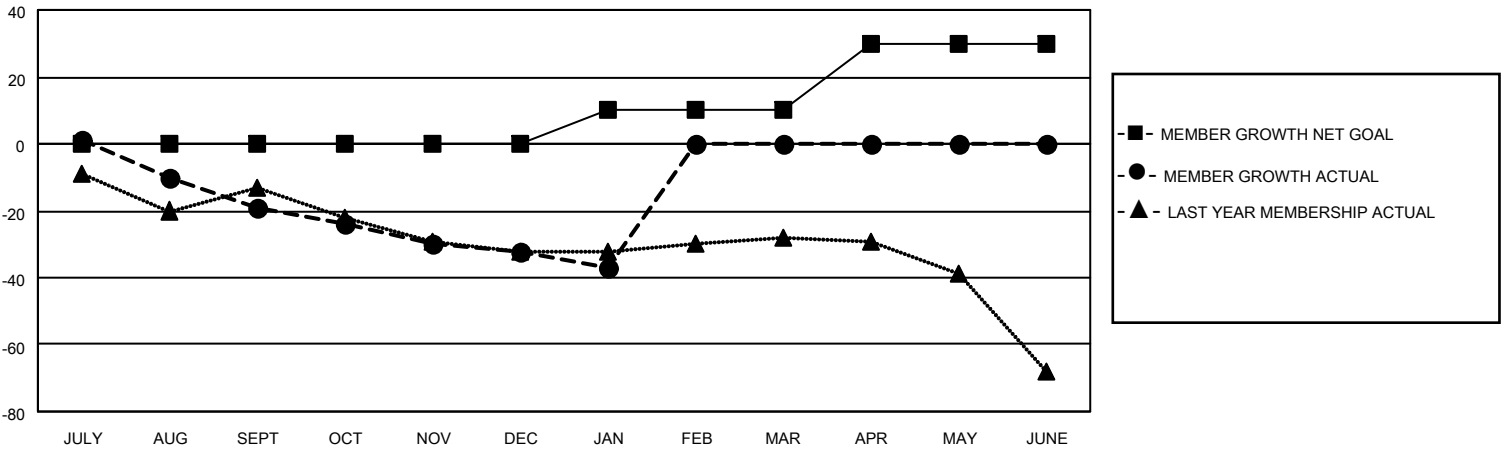
Clubs			
RESULTS FOR 2020-2021			
QUARTER	NEW CLUB GOAL	NEW CLUBS	DROPPED CLUBS
JULY/AUG/SEPT	0	0	0
OCT/NOV/DEC	0	0	0
JAN/FEB/MAR	1	0	0
APR/MAY/JUNE	0	0	0

Members			
RESULTS FOR 2020-2021			
QUARTER	MEMBER GROWTH NET GOAL	MEMBER GROWTH ACTUAL	DROPPED MEMBERS ACTUAL (including transfers)
JULY/AUG/SEPT	0	14	29
OCT/NOV/DEC	0	36	42
JAN/FEB/MAR	10	2	7
APR/MAY/JUNE	20	0	0

**GOALS AND ACTUAL NEW CLUBS CUMULATIVE**



**GOALS AND ACTUAL MEMBERS CUMULATIVE**



**DROPPED CLUBS: 0**

9 CLUBS OF 54 ADDED 1 OR MORE NEW MEMBERS

<u>GENDER DISTRIBUTION</u>	
MALE	717 (61.39%)
FEMALE	451 (38.61%)

<u>DROPPED MEMBERS</u>	
DECEASED	19
CLUB CANCELLED	0
OTHER	59
<b>TOTAL</b>	<b>78</b>

[CLICK HERE FOR CUMULATIVE MEMBERSHIP DATA](#)

TOTAL FAMILY UNIT MEMBERS	357
FAMILY MEMBERS PAYING HALF DUES	185